



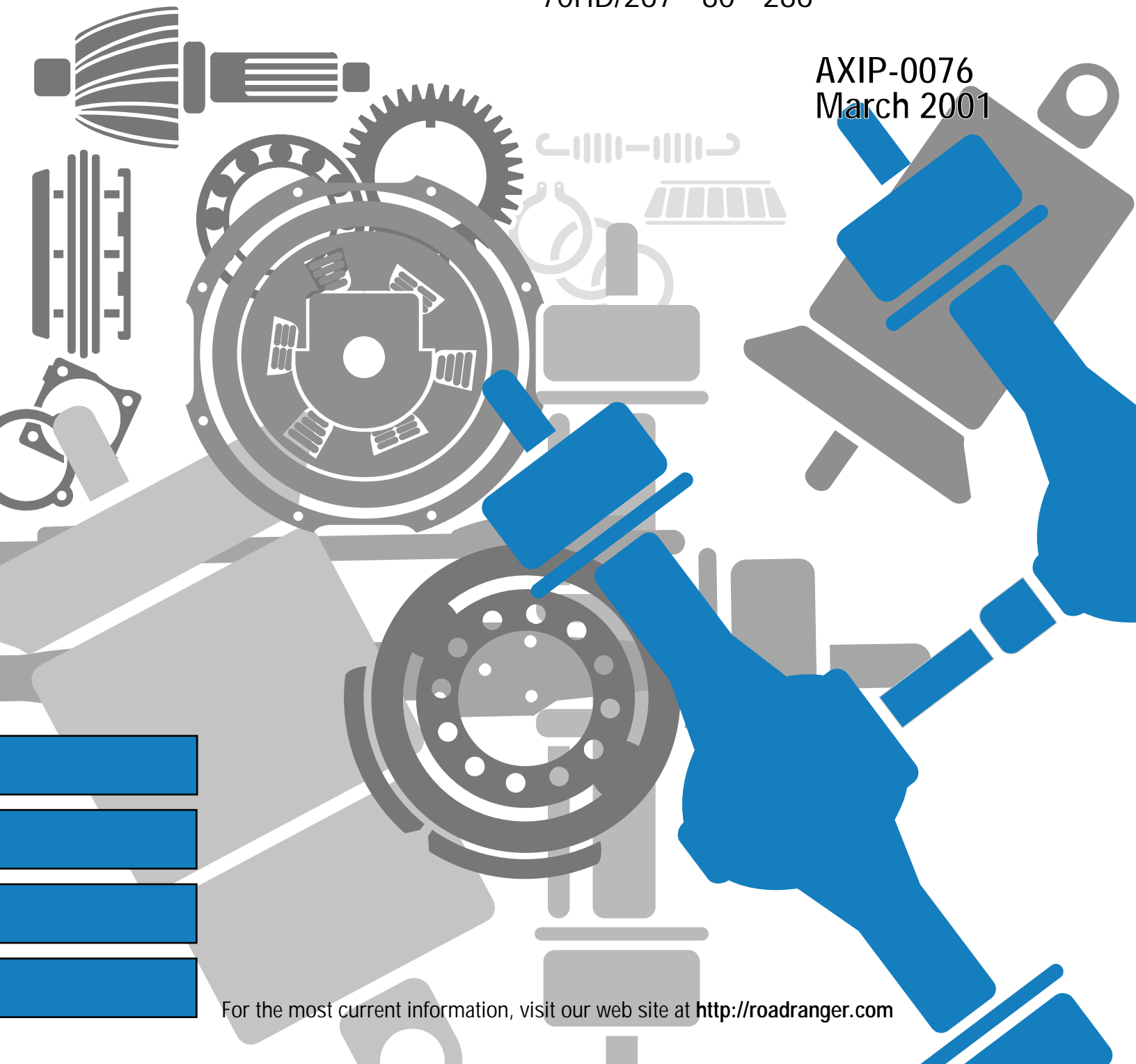
Dana[®] Spicer[®]

Illustrated Parts List

Single Speed Drive Axle

70HD/267 • 80 • 286

AXIP-0076
March 2001



For the most current information, visit our web site at <http://roadranger.com>

SPICER®



Table of Contents

How to use the Illustrated Parts List	2
Model Specifications	3
Axle Identification	3
Components	4
Parts List	5
Differential Case Assembly	7
Ring Gear and Pinion	7
Housings	7
Bearing Pre-load Shim (Outer)	8

How To Use Illustrated Parts List

Ordering Parts

- This parts book is organized in sections according to parts servicing requirements. Use the Contents or page headings and colored tabs to find information.
- Use this book to order parts for your Eaton Axle.
- For convenience, part numbers have been included for all pieces of the carrier assembly. Some of these parts, such as the carrier and caps, are serviced only in kits or assemblies. Part numbers are for your reference only. Those parts not serviced separately are identified with NSS.

Kits and Assemblies

- Kits and Assemblies contain groups of individual or assembled parts developed for optimal replacement or repair of a service problem.
- Kits and Assemblies are shown with applicable parts groupings in the parts listing.
- See the Appendix for detailed information concerning kits applicable to this model.

Abbreviations

- **AR - As Required** - Parts that vary in quantity with each axle. Example: shims
- **NSS - Not Serviced Separately** - Items which can only be purchased in sets, kit form or service assemblies. Example: brake shoes.
- **RH/LH - Right Hand/Left Hand** - Determined as viewed from behind the vehicle looking forward.
- **"RTV" - Gasket Compound** - Formed-in-place gasket sealer. It is recommended for use on all surfaces requiring a gasket.
- **Assy - Assembly**
- **Brg - Bearing**
- **Diff - Differential**
- **Hsg - Housing**
- **Inv - Involute**
- **IASS - In Axle Speed Sensor**
- **ABS - Antilock Brake System**
- **N/A - Not Applicable**
- **Str - Straight**

Illustrations

- Illustrations show parts in assembly groups.
- Item numbers on illustrations correspond with parts listings on pages that accompany the drawings.
- Notes are included on illustrations where needed.

Parts Listings

- Parts listings are defined by parts groupings and are broken down by service assemblies.
- Parts Listings identify a part for servicing with the following categories:
 - Item** - corresponds with numbers on illustrations for part identification
 - Description** - specifies part name or description
 - Quantity (Qty)** - quantity required for assembly
 - Current Part** - service part numbers are broken down by model, type or other applicable information
 - Notes** - define unique characteristics or replacement notes
 - Kits / Assy's Where Used** - indicates Kits or Assemblies that contain a particular part

* Other pertinent information is listed in tables or parts listings as required.

Effectively using a parts listing—Example

Follow the example below to locate and order exactly what is required for servicing.

Match to items on illustration Use to identify Part		Order this quantity for servicing	Order Part Number by Model indicated		Indicates information important to ordering or use
Item	Description	Qty	2671 (70HD/267)	2861 (80/286)	Notes
1	Axle Shaft	2	123456	789101	See Axle Shaft Chart
2	Flat Washer	4	246810	121416	

Kits And Assemblies

Oil Seal & Shim Kit	216225	Includes 29-30, 36
Basic Overhaul Kit	216221	Contents Identified with •

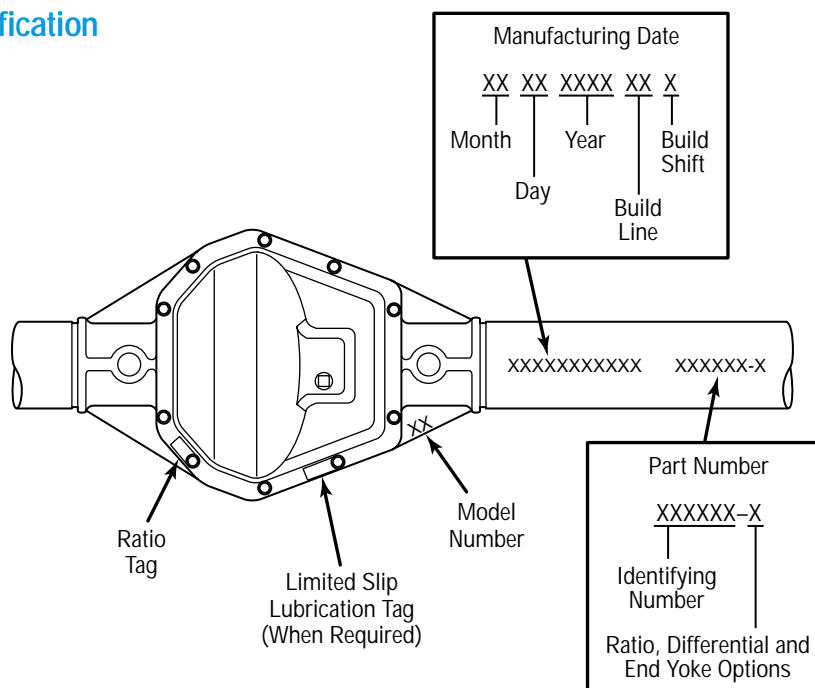
Model M80 General Specifications

Type Axle	Full-Float
Typical Weight (Axle Assembly Without Brakes)	370 lb.
Weight (Center Section Only)	180 lb.
Oil Capacity (Approx.)	0-Deg. Pinion Angle, 4.2 qt.
Pinion Input Spline	24/48 Pitch, 37T, 1.978" P.D.
Side Gear Spline	24/48 Pitch, 35T, 1.625" P.D.
Ring Gear Diameter	11.3"
Nominal GAW Rating	11,000 lb.
Nominal GCW Rating	26,000 lb.
Output Torque (Max. Intermittent)	10,000 ft.-lb.
Output Torque (Continuous)	2,500 ft.-lb.
Brakes (Optional)	Disc
Tube Diameter	4.0"
Wheel Mounting (Typical)	Six, 3/4" Dia. Bolts on 8.75" Circle

Hypoid Gearing (Ratio/Tooth Combination)

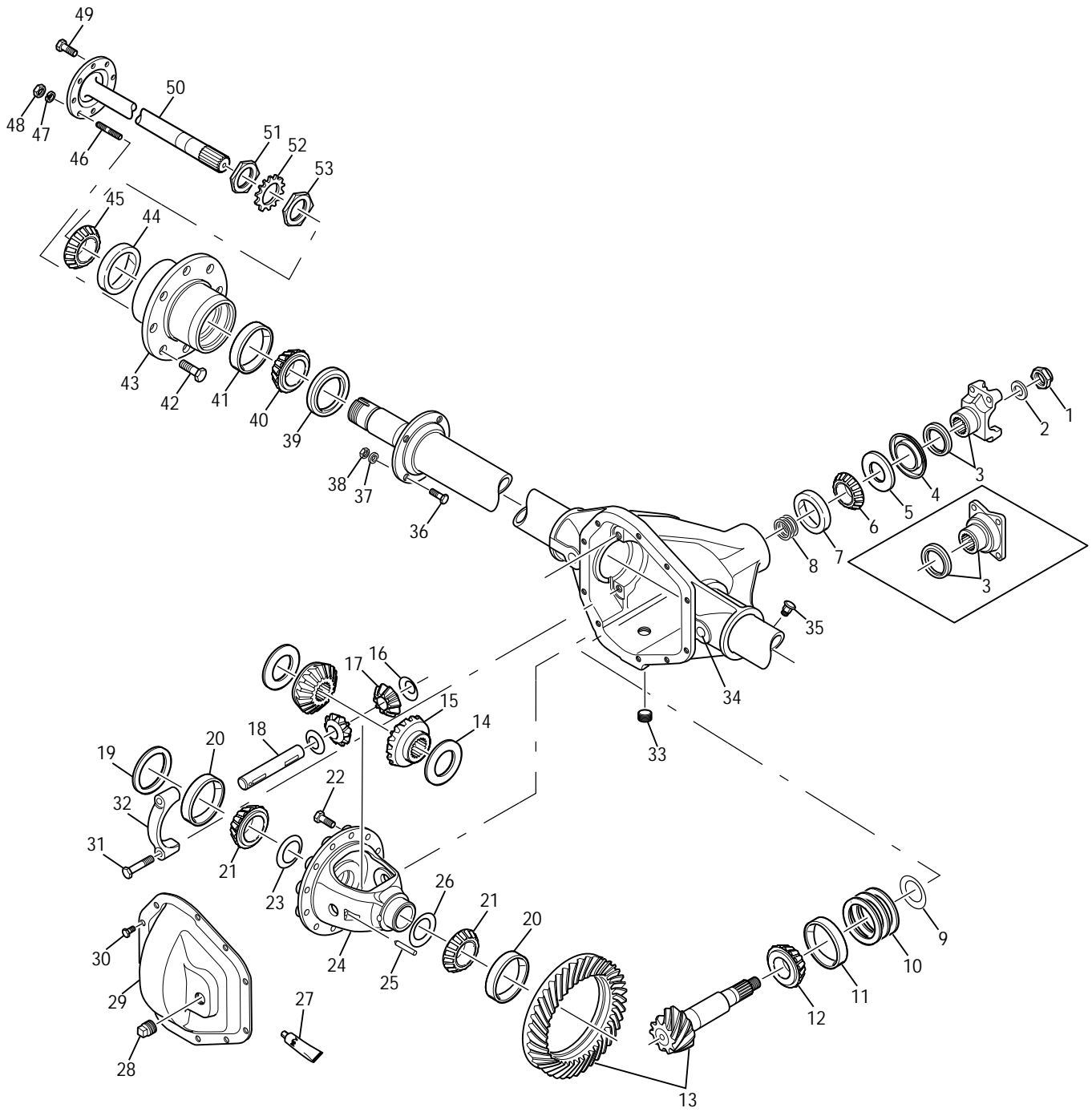
Ratio	3.31	3.73	4.63	5.13
Tooth Comb.	43:13	41:11	37:8	41:8

Axle Identification



Spicer axles are identified with a manufacturing date and complete part number stamped on the right-hand tube. The part number may also appear on a metal tag attached to the cover plate by the cover screws, depending upon the requirements of the vehicle manufacturer.

Note: Use the complete part number and build date when referring to the axle. It may be necessary to wipe or scrape off dirt from the axle housing in order to view the numbers. If you cannot view the number, refer to the vehicle manufacturer's service and/or parts manual for proper identification.



Item	Part Number	Qty.	70HD/267	80	286
1	Pinion Nut	1	30271	37082	37082
2	Pinion Nut Washer	1	30275	37104	37104
3	End Yoke	1	**	**	**
4	Pinion Oil Seal	1	42449	46411-1	46411-1
5	Pinion Thrust Washer	1	42737	42430	42430
6	Outer Pinion Bearing - Cone	1	550358	566000	566000
7	Outer Pinion Bearing - Cup	1	550359	565999	565999
8	Outer Pinion Bearing Shims		A/R 34801	See Page 8 42429	See Page 8 42429
9	Outer Pinion Bearing Spacer	1	46176	NONE	NONE
10	Inner Pinion Bearing Shims				
	(.003)	A/R	30797-1	30797-1	30797-1
	(.005)	A/R	30797-2	30797-2	30797-2
	(.010)	A/R	30797-3	30797-3	30797-3
	(.030)	A/R	30797-4	30797-4	30797-4
11	Inner Pinion Bearing - Cup	1	550400	550400	566074
12	Inner Pinion Bearing - Cone	1	550399	550399	566073
13	KIT - RING & PINION	1	See Page 7	See Page 7	See Page 7
	Kit - Differential Case Assembly		See Page 7	See Page 7	See Page 7
14	Side Gear Thrust Washer	2	34729	34729	34729
15	Side Gear (Wheel Diff)	2	35079 35sp	42411 35sp	43652 37sp
16	Side Pinion Thrust Washer	2	35082	35082	35082
17	Side Pinion (Wheel Diff)	2	35080	42413	42413
18	Wheel Diff Cross Shaft	1	46640	46640	46640
19	Outboard Diff Spacer	2	NONE	42431	42431
20	Differential Bearing - Cup	2	550426	550426	550426
21	Differential Bearing - Cone	2	550425	550425	550425
22	KIT - RING GEAR BOLTS	12	701056-1X	701088-1X	701088-1X
23	Flange Half Bearing Shims				
	(.003)	A/R	30276-1	30276-1	30276-1
	(.005)	A/R	30276-2	30276-2	30276-2
	(.010)	A/R	30276-3	30276-3	30276-3
	(.030)	A/R	30276-4	30276-4	30276-4
24	KIT - DIFFERENTIAL CASE ASSEMBLY		See Page 7	See Page 7	See Page 7
	Case Only				
	4.10 Ratio and Down	1		42684	42684
	4.56 Ratio and Up	1		42409	42409
	4.10 Ratio and Down	1	36659		
	4.56 Ratio and Up	1	36660		
25	Diff Shift Lock	1	47024	47024	47024
26	Plain Half Bearing Shims				
	(.003)	A/R	30276-1	30276-1	30276-1
	(.005)	A/R	30276-2	30276-2	30276-2
	(.010)	A/R	30276-3	30276-3	30276-3
	(.030)	A/R	30276-4	30276-4	30276-4
27	RTV Sealant	1	**	38615	38615
28	Cover Fill Plug	1	36472	36472	36472

Item	Part Number	Qty	70HD/267	80	286	Items Included
29	KIT - CARRIER COVER ASSEMBLY	1	707102X	73171X		29, 30, 33
30	KIT - CARRIER COVER BOLTS	10	701034X	701034X		
31	Diff Bearing Cap Bolt	2	500400-20	48632-1	48632-1	
32	Diff Bearing Cap	2	NSS	NSS	NSS	
33	Drain Plug	1	43180	43180	43180	
34	Axle Housing	1	See Page 7	See Page 7	See Page 7	
35	Tube Vent	1	16979	16979	16979	
36	Brake Mounting Bolts	20	**	**	**	
37	Brake Mounting Washers	20	**	**	**	
38	Brake Mounting Nuts	20	**	**	**	
39	Hub Seal	2	**	**	**	
40	Inner Wheel Bearing - Cone	2	**	**	**	
41	Inner Wheel Bearing - Cup	2	**	**	**	
42	Wheel Hub - Studs	12	**	**	**	
43	Wheel Hub					
	L.H.	1	**	**	**	
	R.H.	1	**	**	**	
44	Outer Wheel Bearing - Cup	2	**	**	**	
45	Outer Wheel Bearing - Cone	2	**	**	**	
46	Axle Shaft - Stud (Tapered Flange Holes)	16	**	**	**	
47	Axle Shaft - Stud Nut	16	36280	36280	36280	
48	Stud Nut	16	36880	36880	36880	
49	Axle Shaft - Bolt (Straight Flange Holes)	16	45816	45816	45816	
50	Axle Shaft	2	**	**	**	
51	Outer Spindle Nut (Tapered Flange Holes)	2	36025	36025	36025	
52	Spindle Nut Locking Washer (Tapered Flange Holes)	2	36027	36027	36027	
53	Inner Spindle Nut					
	Tapered Flange Holes	2	36026	36026	36026	
	Straight Flange Holes	2	46471	46471	46471	

* Part not serviced individually, See Service Kits

** See specific Axle Assembly Bill of Material

A/R As Required

Differential Case Assembly (STD)

Ratio	Spline	70HD/267	80	286	Items Included
Under 4.10	35	070DA100-2X	73354X	73354X	
4.10 thru 7.17	35	070DA100-1X	73165X	73165X	14, 15, 16, 17, 18, 24
3.23 thru 3.73	37	28156X	74220X	74220X	
4.10 thru 7.17	37	28158X	73955X	73599X	

Ring Gear and Pinion

Ratio	70HD/267	80	286	Items Included
3.23		707060-8X		1,2,4,5,6,7,8,10,11,12,13,22,23,27
3.31		707060-7X		
3.54	706999-1X			
3.73	706999-2X	707060-3X	708120-5X	
4.10	706999-4X	707476-2X*	708120-6X	
4.56	706999-6X			
4.63		707361-3X*	707476-14X	
4.88	706999-8X		708120-10X	
5.13	706999-9X	707361-4X*		
5.86	706999-10X			
6.17	706999-13X			
7.17	706999-15X			

* Shot peened for strength and noise reduction.

Housings: Includes Carrier Sub Assy and Tubes

Spring Suspension

Ratio	70HD/267	80	286	Wheel Ends
Freightliner	070CH297X	080CH101-X	511383	**
Freightliner	080CH111X	080CH118-X	511384	**
Freightliner		070CH232X		**

* All 80 model housings must order 566073 Cone and 566074 Cup.

**See specific axle assembly bill of material.

Bearing Preload Shim (Outer)

Model 267 (70HD)

Thickness		Spicer Part Number
(inches)	(mm)	
.014	.36	34801-1
.016	.41	34801-2
.018	.46	34801-3
.020	.51	34801-4
.022	.56	34801-5
.030	.76	34801-6
.015	.38	34801-7
.021	.53	34801-8
.023	.58	34801-9
.010	.25	34801-10
.024	.61	34801-11
.025	.64	34801-12
.026	.66	34801-13
.027	.69	34801-14
.028	.71	34801-15
.029	.74	34801-16
.031	.79	34801-17
.032	.81	34801-18
.033	.84	34801-19
.034	.86	34801-20
.035	.89	34801-21
.036	.91	34801-22
.037	.94	34801-23
.038	.97	34801-24
.039	.99	34801-25
.040	1.02	34801-26
.041	1.04	34801-27
.042	1.07	34801-28
.043	1.09	34801-29
.044	1.12	34801-30
.045	1.14	34801-31
.046	1.17	34801-32
.047	1.19	34801-33
.048	1.22	34801-34
.049	1.24	34801-35
.050	1.27	34801-36

Model 286 (80)

Thickness		Spicer Part Number
(inches)	(mm)	
.014	.36	42429-1
.015	.38	42429-2
.016	.41	42429-3
.018	.46	42429-4
.020	.51	42429-5
.021	.53	42429-6
.022	.56	42429-7
.023	.58	42429-8
.030	.76	42429-9

Dana Corporation
Spicer Heavy Axle & Brake Division
P.O. Box 4097
Kalamazoo, Michigan 49003

Roadranger®

MORE TIME ON THE ROAD.

The Roadranger® System is an unbeatable combination of the best products from Eaton and Dana, partnering to provide you the most advanced, most trouble-free drivetrain in the industry. And it's backed by the Roadrangers -- the most experienced, most expert, most accessible drivetrain consultants in the business.

For spec'ing or service assistance, call 1-800-826-HELP (4357), 24 hours a day, 7 days a week, (Mexico: 8-332-1515) for more time on the road. Or visit our web site at <http://roadranger.com>.

