

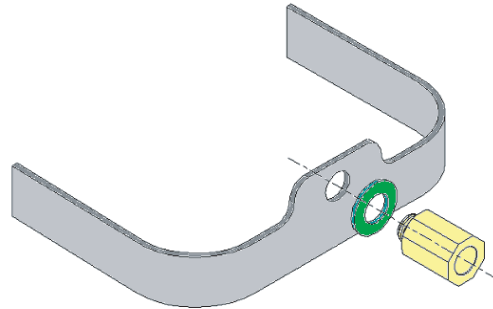


Truck Components

Subject: **Installation instructions for Anti-Rotation Clip (XLK1)**

Effects: **Clutches fitted with XL release bearing and Roller Yoke**

- Contents:
- XLK1
 - Wear Clip, qty 1
 - Belleville washer, qty 1
 - Threaded adapter, qty 1



Installation Instructions:

1. Remove inspection cover from clutch housing.
2. Remove grease zerk or lube tube from the clutch bearing housing.
3. Insert the wear clip between the bearing housing and the rollers on the yoke, ensuring that the hole aligns with the fitting on the bearing housing.
4. Place the belleville washer over the adapter (cone facing out) and secure the clip to the bearing housing using the grease zerk hole. Tighten until clip is secure (15~20 ft-lb).
5. Re-install the grease zerk or lube tube extension.
6. Re-install the inspection cover to the clutch housing.

