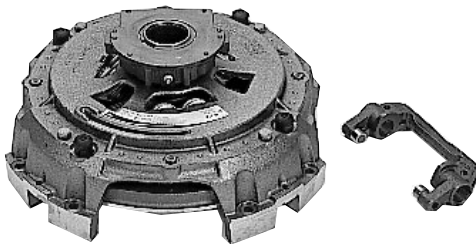


Solo™ XL (Extended Lube) 1552
2250 lb. ft. (3050Nm)
Clutch Installation (109706-22)



Solo™ XL (Extended Lube) 1552

Eaton Clutch Division now offers a 2250 lb. ft. **Eaton® Fuller® Solo™ XL (Extended Lube) Clutch** to match the **Eaton® Fuller® RTLO/F-22918B Transmission**.

Solo XL Clutch Installation 109706-22

Cover Assembly	139032-6	4000# PL special plate concavity for 2250 lb. ft. rating	Fig.# 1
Driven Disc Front	128654	New damper rated to 2250lb.ft. V.C.T.™ – 6 paddle ceramic	Fig.# 2
Driven Disc Rear	128654	New damper rated to 2250 lb. ft. V.C.T.™ – 6 paddle ceramic	Fig.# 2
Inner Hub Assembly	125500	2-inch 14-tooth involute input spline	Fig.# 3
Intermediate Plate & Pin Assembly	125491	Increased plate concavity .012" vs .002"	Fig.# 4
Roller Yoke	97-509-10-1X	No Change	Fig.# 5
Clutch Brake	127760	No Change	Fig.# 6

Note: Photos of figures 1-6 are on back.

Installation Effects:

Dimensionally equivalent to our Solo XL 1552 except for a *2-inch 14-tooth involute spline inner hub* for the V.C.T.™ 2250 lb. ft. damper. Continue to use the standard Torque Limiting Clutch Brake (127760) along with 97-509-10-1X Roller Yoke.

Applications:

Only available with a soft rate damper and designed to be used with a 2-inch 14-tooth involute spline input shaft.

Pressure Plate and Intermediate Plate:

The Pressure Plate and the Intermediate Plate will incorporate a new machining process. The appearance of the surface finish will be different than you have seen in the past, see figures 1 and 4.

Eaton® Fuller® Solo™ XL 1552 2250 lb-ft. Clutch
Part # 109706-22



Figure 1



Figure 2



Figure 3



Figure 4



Figure 5

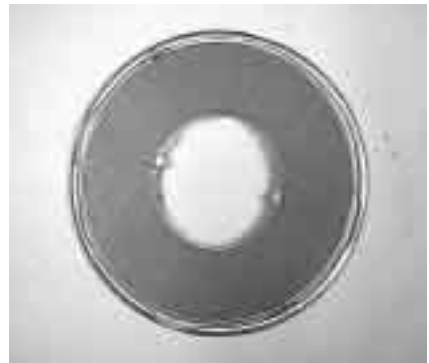


Figure 6

Eaton Corporation
Clutch Division
201 Brandon Street
Auburn, IN 46706

Roadranger®

MORE TIME ON THE ROAD.

The Roadranger® System is an unbeatable combination of the best products from Eaton and Dana – partnering to provide you the most advanced, most trouble-free drivetrain in the industry. And it's backed by the Roadrangers – the most experienced, most expert, most accessible drivetrain consultants in the business.

For spec'ing or service assistance, call **1-800-826-HELP** (4357) 24 hours a day, 7 days a week, (Mexico: 8-332-1515) for more time on the road. Or visit our web site at <http://roadranger.com>.