



X510-2
April 2011

Supersedes X510-2
dated January 2002

Light Axle Parts for Ford Applications

1999-2011



Interactive Product
Catalog



www.spicerparts.com



CONTENTS

How to Use This Catalog	2
General Information	4
Axle Kits	6
Model Super 30 /186 Front Axles	
Explorer	
Exploded View	8
Parts Listing	8
Bill of Material Table.....	9
Variable Parts Table	10
Model 35 /194 Axles with CV Joints	
Explorer, Ranger & Sport Trac Pick-up	
Exploded View	12
Parts Listing	12
Bill of Material Table.....	13
Variable Parts Table	14
Model 50 /229 Front Axles	
F-250 & F-350	
Exploded View	16
Parts Listing	17
Bill of Material Table.....	18
Variable Parts Table	20
Model 60 /248 Front Axles	
F-250, F-350, F-450 & F-550	
Exploded View	22
Parts Listing	23
Bill of Material Table.....	24
Variable Parts Table	27
Model Super 60 /256 Front Axles	
6K/7K Monobeam Coil, F-250, F-350, F-450 & F-550	
Exploded View	32
Parts Listing	33
Bill of Material Table.....	34
Variable Parts Table	38
Model 60 /248 Rear Axles	
E-150, E-250 & E-350	
Exploded View	42
Parts Listing	43
Bill of Material Table.....	44
Variable Parts Table	50
Model Super 70 /273 Rear Axles	
E-450	
Exploded View	56
Parts Listing	57
Bill of Material Table.....	58
Model 70 /267 Rear Axles	
E-350 & E-450	
Exploded View	60
Parts Listing	61
Bill of Material Table.....	62
Variable Parts Table	66
Model 80 /286 Rear Axles	
E-350, E-450, F-350, F-450 & F53 Motor Home	
Exploded View	72
Parts Listing	73
Bill of Material Table.....	74
Variable Parts Table	81
Camber/ Casting Bushing Table	86
Differential Bearing Adjustment Shim Table	87

How to Use This Catalog

This catalog contains applications and part listings for front and rear axles which fit Ford vehicles with model years **1999** and newer. For information on model years between **1967-1978**, please refer to catalog X510-8DSD; Ford model years **1979-1999** refer to X510-9. For miscellaneous models from years **1979-1984**, please refer to X510-7DSD.

The data in this publication is arranged by make, then in numerical order by model for front axles and then for rear axles. Each model contains the following three sections as appropriate:

- Parts Listing and Exploded View**

This section contains an exploded view of the axle and lists all the part numbers for those parts illustrated. The parts that do not have a common part number have a footnote reference indicating where to find the correct part number for each Bill of Material.

X510-2

80 /286 Rear Parts Listing



ITEM NO.	PART NUMBER	DESCRIPTION	ITEM NO.	PART NUMBER	DESCRIPTION
1	-(3)	Housing - Axle Service	25	42413	Pinion - Differential (std)
2	-(1)	Drive Pinion & Gear kit	26	-(2)	Gear - Differential (std)
3	-(2)	Inner Pinion Bearing Kit	27	35082	Thrustwasher - Diff Pinion (std)
	-(2)	KIT - Pinion Brg Adj Shim (inc 4, 5, 11, 12)	28	34729	Thrustwasher - Diff Gear (std)
	-(2)	KIT - Diff & Pinion Shim (inc 4, 5, 10, 11, 20)	29	46640	Shaft - Differential (std)
4	-(1)	Inner Pinion Adj Shim	30	-(2)	Seal - Oil (Inner Wheel)
			31	-(2)	Bearing Cone - Inner Wheel
				-(3)	Bearing Cup - Inner Wheel

- Bill of Material Table**

This section contains vehicle applications listed in order by year. Included in the table are the major kits and assemblies for each Bill of Material number.



80 /286 Rear Bill of Material Table

X510-2

Axle			Axle Kits				Shaft & Joint Assy.	
Bill of Material	Diff. Type	Ratio	Ring Gear & Pinion Kit ⁽⁷⁾	Differential			Right Hand Shaft Assy.	Left Hand Shaft Assy.
				Case Assy. Kit ⁽⁸⁾	Case Kit	Inner Parts Kit		
1999 E-350 Super Duty - DRW - Full Float								
606144-1	Standard	4.10	707361-12X	707330X	707230X	707063X	46930-1	46930-2
606144-3	Standard	4.63	707361-5X	707330X	707230X	707063X	46930-1	46930-2
1999 1/2 E-450 Super Duty DRW w/ABS								
606217-1	Standard	4.10	707361-12X	708031	708032	707063X	46930-1	46930-2
606217-2	Standard	4.63	707361-13X	708031	708032	707063X	46930-1	46930-2
1999 1/2 F-450 Motor Home DRW-Full Float w/ABS								
605944-1	Standard	5.38	708120-11	707394X	707395X	707185X	47852-1	47852-1

- **Variable Parts Table**

This section contains the individual part numbers that vary by Bill of Material number for a given model.

X510-2

80 /286 Rear Variable Parts Listing



Kits & Parts - Use With All Applications							
Description & Item Number (Refer to "Exploded View" at the front of this section)			Bills of Material				
			605944	606144 606217	606224	606225	606226 606227
1	Inner Pinion Bearing Kit	3	707447X	707065X	707447X	707447X	707447X
2	KIT - Pinion Brg Adj Shim	-	707480X	707066X	707480X	707480X	707480X
3	KIT - Diff & Pinion Shim	-	707481X	707365X	707481X	707481X	707481X
4	Seal - Oil	-	51180	-	51180	51180	51180
5	End Yoke or Comp.Flange (inc 10)	9	3-4-11281-1X	76809X	84061	84062	84061
6	Slinger - End Yoke	10	231872	42432	51182	51182	51182
7	KIT - Carrier Cover	-	707478X	707231X	707479X	707478X	707479X
8	Cover - Carrier	13	47843	42434	47717-1	47843	47717-1
9	Bolt - Carrier Cover (qty 10)	15	34822	34822	34822	47508	34822

Note: Additional information on Spicer axles can be found in our General Information catalog number XGI. It contains the following sections:

- Bill of Material Numerical Listing
- Ring and Pinion Kits
- Differential Case Assembly Kits
- Axle Shaft Dimension and Components

General Information

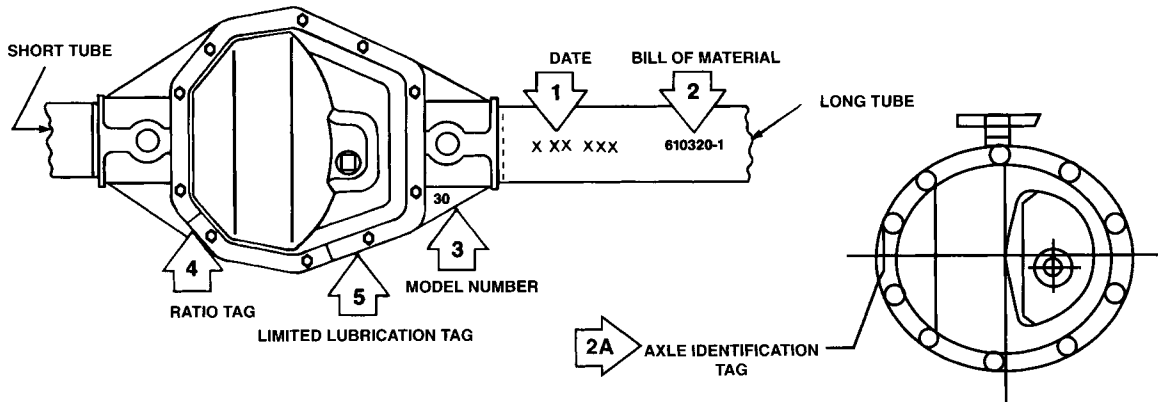
How To Identify A Spicer Axle

All Spicer Carrier Type axles are identified with a manufacturing date (1) and Bill of Material number (2) stamped on the right or left hand tube on driving axles. The Bill of Material number may also be found on the carrier in some models as shown in illustration (2A). For independent front suspension (IFS) axles, the B/M number may be located at one of three locations: 1) A vertically positioned tag near the center of the right hand side support arm, 2) stamped into the left hand side support arm (opposite end of the camber adjuster), or 3) stamped into the "nose end" of the axle carrier. The location of the information will depend on the manufacturing date of the axle.

The axle model number will be cast into one of the webs as shown (3), or it can be on the nose.

Each axle contains a gear ratio tag (4), and if the axle is equipped with a limited slip differential, it will have a tag specifying the type of limited slip lubricant to be used (5).

Refer to the appropriate model number section for parts identification and a breakdown of the Bill of Material.



How To Change Gear Ratios

To increase or decrease a gear ratio, there are certain steps that must be taken. The differential case depends upon the ratio desired. For each axle model, there is a high-ratio and a low-ratio case as illustrated below:

Axle Model	Low Ratio Case	High Ratio Case	Axle Model	Low Ratio Case
High Ratio Case				
Model 27	3.73 and Down	3.92 and Up	Model 50	4.10 and Down
Model 28	3.45 and Down	3.73 and Up	Model 60	4.10 and Down
Model 28 IFS Aerostar	2.27, 3.73	—	Model 61	4.56 and Up
Model 30	3.55 and Down	3.73 and Up	Semi Float	3.00 and 3.07 only
Model 35	2.35 only	—	Model 61	
Model 35	2.73 - 3.31	3.54 and Up	Full Float	3.31 and Down
Model 36 ICA	2.73 and Down	3.07 and Up	Model 70	3.54 and Up
Model 44	3.73 and Down	3.92 and Up	Model 70	4.10 and Down
Model 44 ICA			Model 70-3HD	3.42 and Down
1984 & earlier	3.73 and Down	3.92 and Up	Model 70-2UA	3.07 only
Model 44 ICA			Model 80	3.73 and Down
1985 & later	2.87 and Down	3.07 and Up		4.10 and Up

Example - If you have a model 44 Rear Axle with a 3.54 ratio and wish to change to a 3.73 ratio, you change only the ring gear and pinion assembly. If you change the ratio to a 4.09, you must change to a high-ratio case in addition to changing the ring gear and pinion. The application section will show you what case to use. When the vehicle is equipped with both front and rear driving axles, the gear ratios must be the same in both axles. **The drive gear screws are self-locking and must be replaced with new screws each time that they are removed.**

How Limited Slip Differentials Operate

A conventional differential transmits all the ring gear torque through the differential gears to the axle shafts. Torque is at all times equal on the axle shafts, and if one wheel slips, the other wheel can only put out as much torque as the slipping wheel.

The Spicer Limited Slip differential has the same power flow as a conventional differential, plus a more direct flow which automatically takes effect as driving conditions demand. This more direct power flow is from the differential case to each axle shaft through a clutch plate and disc arrangement.

Arrangement of these plates and discs is at the option of the vehicle manufacturer, so care should be taken during disassembly to note the arrangement of these components.

The Limited Slip construction permits differential action when required for turning corners and transmits equal torque to both wheels when driving straight ahead. However, when one wheel tries to spin due to leaving the ground, a patch of ice, etc., the clutch packs automatically provide more torque to the wheel which is not trying to spin.

The Limited Slip differential resists wheel spin on bumpy roads and provides more pulling power when one wheel tries to slip. In many cases of differences in traction, pulling power will be automatically provided until both wheels start to slip.

In diagnosis of vehicle operators' complaints, it is important to recognize two things.

1. If, with unequal traction, both wheels slip, the Limited Slip Differential has done all it can possibly do.
2. In extreme cases of differences in traction, the wheel with the least traction may spin after the Limited Slip has transferred as much torque as possible to the non-slipping wheel.

How To Distinguish a Powr-Lok™ from a Trac-Lok™

All Models **except Models 70/267 and 80/286**: The Powr-Lok design is identified by its 2-piece case. The Trac-Lok design is identified by its 1-piece case.

Models 70/267 and 80/286 only: Both the Powr-Lok and the Trac-Lok use 2-piece cases in the model 70 (267) and 80 (286) axle. The difference between the two is in the shape of the holes for the cross shaft. The Powr-Lok case will have cross shaft holes that are "U" shaped in one case half and "V" shaped in the other case half. The Trac-Lok case will have cross shaft holes that are semicircles in both case halves.

Model 80/286 only: It is also possible to replace an existing Powr-Lok unit with a complete Trac-Lok unit. For this purpose, the differential case assembly must be replaced.

How To Obtain Special Service Tools

Special service tools (see service manuals) can be obtained from the following company:

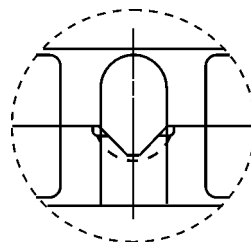
Kent-Moore
 OE Tool and Equipment Group
 SPX Corporation
 28635 Mound Road
 Warren MI 48092-3499
 (800) 345-2233
www.servicesolutions.spx.com



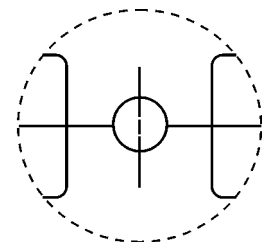
POWR-LOK™
 2-Piece Case
 4 Pinion Mate Gears



TRAC-LOK™
 1 or 2-Piece Case
 2 or 4 Pinion Mate Gears



Cross shaft view
 of a Model 80
 Power Lok case



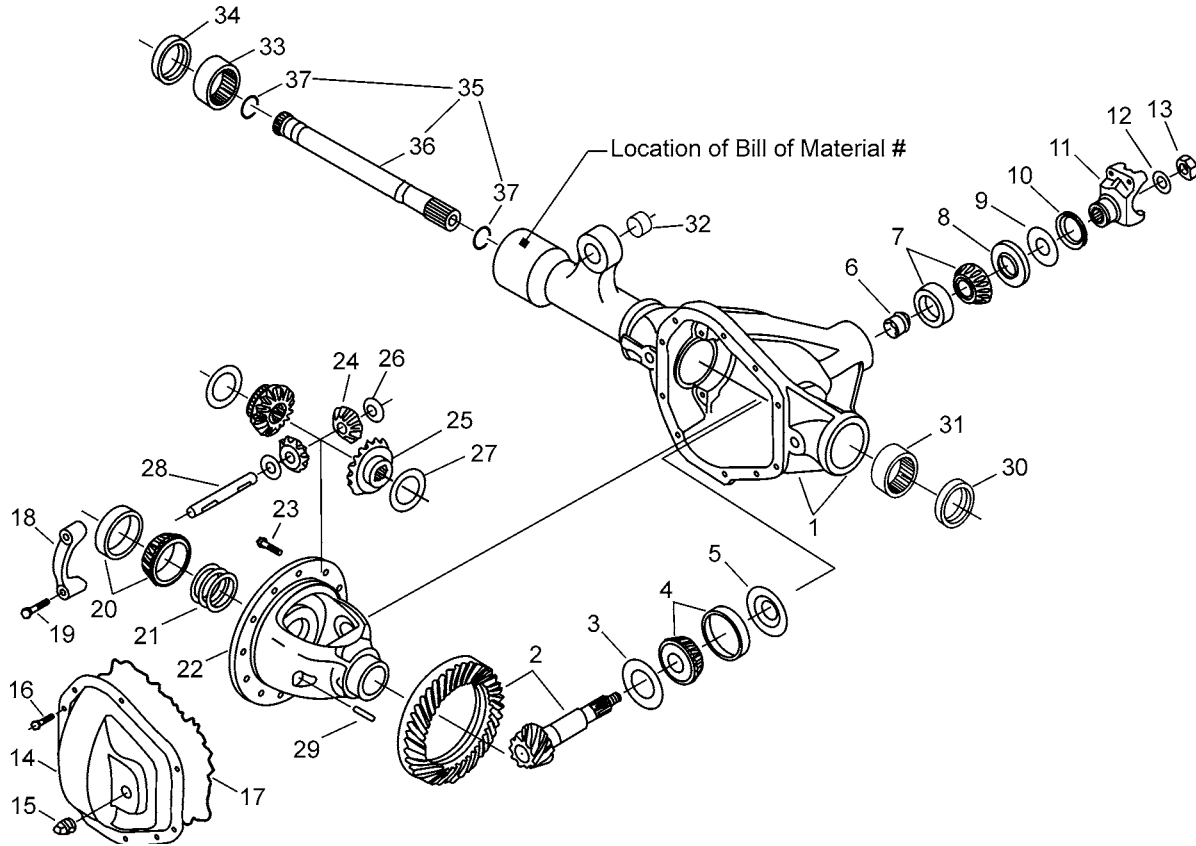
Cross shaft view
 of a Model 80
 Trak Lok case

SPICER® LIGHT AXLE KITS



Model Super 30 /186 Front Axles for Explorer

Ford Super 30 /186 Front for Explorer Exploded View



Parts Listing

ITEM NO.	PART NUMBER	DESCRIPTION	ITEM NO.	PART NUMBER	DESCRIPTION
1	-(3)	Housing - Axle Service	20	706016X	Differential Bearing Kit
2	-(1)	Ring Gear & Pinion Kit	21	701004X	PKG - Diff Adjustment Shim
3	701112X	PKG - Pinion Adj Shim	22	-(1)	Case - Differential
4	-(2)	Inner Pinion Bearing Kit	23	41221	Bolt - Drive Gear (qty 10)
5	-(2)	Baffe - Pinion Oil	24	51451(4)	Pinion - Differential
6	-(2)	Collapsible Spacer	25	48231(4)	Gear - Differential
7	-(2)	Outer Pinion Bearing Kit	26	34096	Thrustwasher - Diff Pinion
8	42778	Slinger - Outer Pinion Brg.	27	40027	Thrustwasher - Diff Gear
9	-(2)	Seal - Pinion	28	-(2)	Shaft - Differential
10	-(2)	Slinger	29	13449	Lock - Differential Shaft
11	-(2)	End Yoke Assembly (inc 10)	30	46065	Seal - Oil
12	30186	Washer - Pinion Nut	31	-(2)	Bearing Assembly
13	30185	Nut - Pinion	32	-(2)	Bushing - Rubber
14	-(3)	KIT - Carrier Cover (inc 14,15,16)	33	-(2)	Bearing Assembly
15	43180	Plug - Carrier Cover	34	46066 (3)	Seal - Oil
16	40286-5	Bolt - Carrier Cover (qty 10)	35	80297	Shaft Assembly (inc 36 & 37)
17	38615	RTV - Silicone Sealant	36	49807(4)	Shaft - Output
18	-(4)	Cap - Differential Bearing	37	46072	Snap Ring
19	40284-1	Bolt - Differential Bearing		-(3)	Shaft & Joint Assembly - Axle

- (1) See "Bill of Material Table" below
- (2) See "Variable Parts Table" within this section
- (3) Contact Vehicle Manufacturer
- (4) Not Sold Separately

Ford Super 30 /186 Front for Explorer

Bill of Material Table

Axle			Axle Kits				Shaft & Joint Assy.	
Bill of Material	Diff. Type	Ratio	Ring Gear & Pinion Kit ⁽⁷⁾	Differential			Right Hand Shaft Assy.	Left Hand Shaft Assy.
				Case Assy. Kit ⁽⁸⁾	Case Kit	Inner Parts Kit		
2001 Explorer								
610833-2	Standard	3.55	708098-2	708100	706007X	708102	- (3)	- (3)
610833-3	Standard	3.73	708098-3	708101	706008X	708102	- (3)	- (3)
610833-5	Standard	4.30	708098-5	708101	706008X	708102	-(3)	-(3)
2006 Explorer								
2005006-1	Standard	3.55	2005046-1	708100	706007X	708102	-(3)	-(3)
2005006-2	Standard	3.73	2005046-2	708101	706008X	708102	-(3)	-(3)
611380-2	Standard	3.55	708098-2	708100	706007X	708102	-(3)	-(3)
611380-3	Standard	3.73	708098-3	708101	706008X	708102	-(3)	-(3)
2007 Explorer								
2005047-1	Standard	3.55	2005046-1	708100	706007X	708102	-(3)	-(3)
2005047-2	Standard	3.73	2005046-2	708101	706008X	708102	-(3)	-(3)

(3) Contact Vehicle Manufacturer

(7) See Ring Gear & Pinion Kits in XGI Catalog for ratio & tooth combinations.

(8) See Differential Case Assy Kits in XGI Catalog for spline data & ratios.



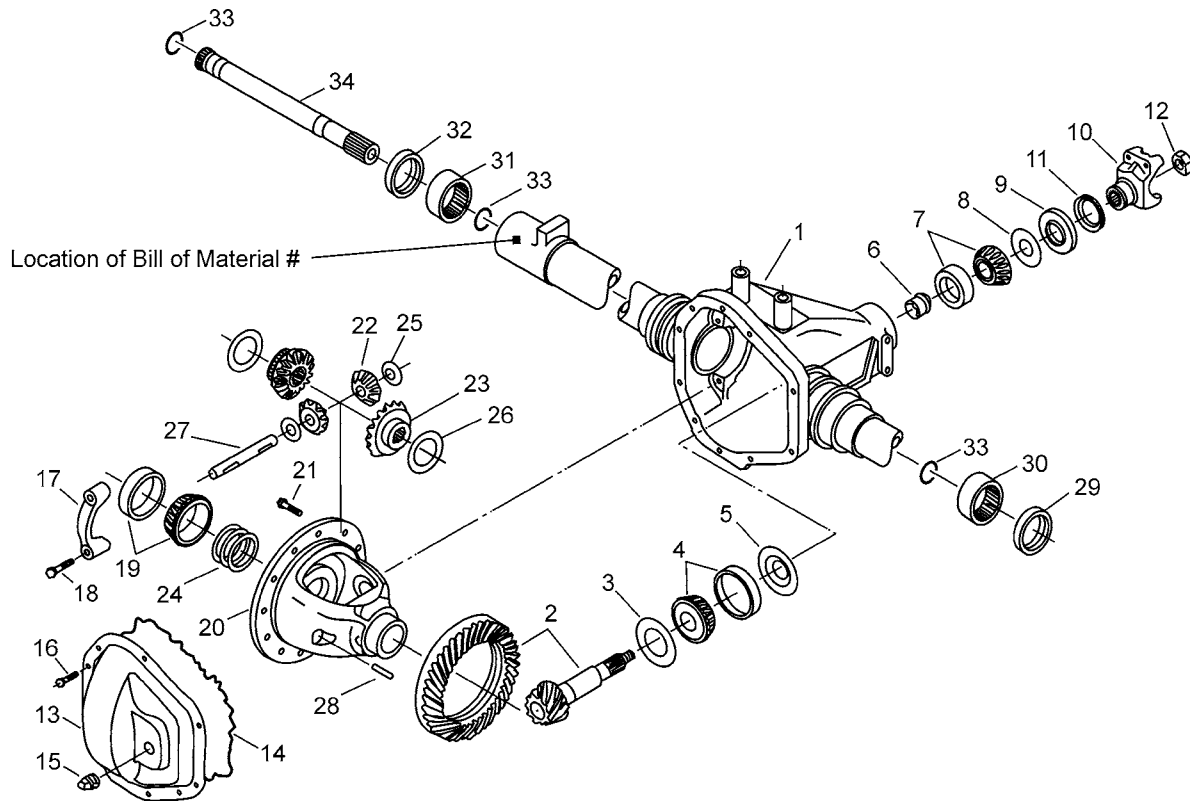
Ford Super 30 /186 Front for Explorer Variable Parts Listing

X510-2

Kits & Parts - Use With All Applications						
Description & Item Number (Refer to "Exploded View" at the front of this section)			Bills of Material			
			2005006	2005047	610833	611380
1	Inner Pinion Bearing Kit	4	2003980	2003980	706015X	706015X
2	Baffe - Pinion Oil	5	-	-	43599	-
3	Collapsible Spacer	6	2003879	2003879	44228	44228
4	Outer Pinion Bearing Kit	7	2003978	2003978	706894X	706894X
5	Seal - Pinion	9	2002974	2002974	51501	51501
6	Slinger	10	2001245	2001245	42779	42779
7	End Yoke Assembly (inc 10)	11	2001252	2006700	2-4-6901-1X	2-4-6901-1X
8	Shaft - Differential	28	2006262	2006262	41648	2006262
9	Bearing Assembly	31	2002806	2002806	566121	2002806
10	Bushing - Rubber	32	2005317	2005317	47272	47272
11	Bearing Assembly	33	2002805	2002805	566063	2002805

**Model 35 /194
Front Axles with CV Joints for
Explorer, Ranger &
Sport Trac Pick-Up**

Ford 35 /194 Front with CV Joints Exploded View



Parts Listing

ITEM NO.	PART NUMBER	DESCRIPTION	ITEM NO.	PART NUMBER	DESCRIPTION
1	-(3)	Housing - Axle Service	18	40284-1	Bolt - Differential Bearing
2	-(1)	Ring Gear & Pinion Kit	19	706016X	Differential Bearing Kit
3	701130X	PKG - Pinion Adj Shim	20	-(1)	Case - Differential
4	707162X	Inner Pinion Bearing Kit	21	41221	Bolt - Drive Gear (qty 8)
5	43599	Baffle - Pinion Oil	22	46504(4)	Pinion - Differential
6	42102	Collapsible Spacer	23	46502(4)	Gear - Differential
7	706894X	Outer Pinion Bearing Kit	24	701004X	Pkg. - Differential Adj Shim
8	42778	Slinger - Outer Pinion Bearing	25	34096	Thrustwasher - Diff Pinion
9	-(2)	Seal - Pinion	26	34095	Thrustwasher - Diff Gear
10	-(2)	End Yoke Assembly (inc 11)	27	41648	Shaft - Differential
11	-(2)	Slinger	28	13449	Lock - Differential Shaft
12	-(2)	Nut - Pinion	29	46065	Seal - Oil
13	47446	Cover - Carrier	30	-(2)	Bearing/Bushing
14	38615	RTV Silicone Sealant	31	-(2)	Bearing/Bushing
15	43180	Plug - Carrier Cover	32	46066(3)	Seal - Oil
16	40286-5	Bolt - Carrier Cover (qty 10)	33	46072	Snap Ring
17	-(4)	Cap - Differential Bearing	34	80297	Shaft Assy.(inc 33)

- (1) See "Bill of Material Table" below
- (2) See "Variable Parts Table" within this section
- (3) Contact Vehicle Manufacturer
- (4) Not Sold Separately

Ford 35 /194 Front with CV Joints

Bill of Material Table



Axle			Axle Kits				Shaft & Joint Assy.	
Bill of Material	Diff. Type	Ratio	Ring Gear & Pinion Kit ⁽⁷⁾	Differential			Right Hand Shaft Assy.	Left Hand Shaft Assy.
				Case Assy. Kit ⁽⁸⁾	Case Kit	Inner Parts Kit		
1999 Explorer - Non-Disconnect - CV								
610774-1	Standard	3.27	707359-1X	707378X	707360X	707379X	-(3)	-(3)
610774-2	Standard	3.55	707359-2X	707378X	707360X	707379X	-(3)	-(3)
610774-3	Standard	3.73	707359-3X	707378X	707360X	707379X	-(3)	-(3)
610774-4	Standard	4.10	707359-4X	707378X	707360X	707379X	-(3)	-(3)
2000 Sport Trac Pick-Up								
611044-1	Standard	3.73	707359-3X	707378X	707360X	707379X	-(3)	-(3)
611044-2	Standard	4.10	707359-4X	707378X	707360X	707379X	-(3)	-(3)
2001 Ranger								
611053-1	Standard	4.56	707359-5X	707378X	707360X	707379X	-(3)	-(3)
2002 Explorer/Ranger - Non-Disconnect - CV								
611222-1	Standard	3.73	707359-3X	707378X	707360X	707379X	-(3)	-(3)
611222-2	Standard	4.10	707359-4X	707378X	707360X	707379X	-(3)	-(3)
2002-04 Explorer/Ranger - Non-Disconnect - CV								
611316-1	Standard	3.73	707359-3X	707378X	707360X	707379X	-(3)	-(3)
611316-2	Standard	4.10	707359-4X	707378X	707360X	707379X	-(3)	-(3)
2004-05 Explorer/Ranger - Non-Disconnect - CV								
2002645-1	Standard	3.73	707359-3X	707378X	707360X	707379X	-(3)	-(3)
2002645-2	Standard	4.10	707359-4X	707378X	707360X	707379X	-(3)	-(3)
2002750-1	Standard	3.73	707359-3X	707378X	707360X	707379X	-(3)	-(3)
2002750-2	Standard	4.10	707359-4X	707378X	707360X	707379X	-(3)	-(3)
611360-1	Standard	3.73	707359-3X	707378X	707360X	707379X	-(3)	-(3)
611360-2	Standard	4.10	707359-4X	707378X	707360X	707379X	-(3)	-(3)
2005 Explorer/Ranger - Non-Disconnect - CV								
2001858-1	Standard	3.55	707359-2X	707378X	707360X	707379X	-(3)	-(3)
2006-07 Explorer/Ranger - Non-Disconnect - CV								
2006015-1	Standard	3.55	707359-2X	707378X	707360X	707379X	-(3)	-(3)
2007-08 Explorer/Ranger - Non-Disconnect - CV								
2006665-1	Standard	3.73	707359-3X	707378X	707360X	707379X	-(3)	-(3)
2006665-2	Standard	4.10	707359-4X	707378X	707360X	707379X	-(3)	-(3)
2007693-1	Standard	3.55	707359-2X	707378X	707360X	707379X	-(3)	-(3)

(3) Contact Vehicle Manufacturer.

(7) See Ring Gear & Pinion Kits in XGI Catalog for ratio & tooth combinations.

(8) See Differential Case Assy Kits in XGI Catalog for spline data & ratios.



Ford 35 /194 Front with CV Joints Variable Parts Listing

X510-2

Kits & Parts - Use With All Applications							
Description & Item Number (Refer to "Exploded View" at the front of this section)			Bills of Material				
			2001858	2002645	2002750	2006015	2006665
1	Seal - Pinion	9	2002974	2002974	2002974	2002974	2002974
2	End Yoke Assembly (inc 11)	10	2001252	2001252	2001252	2001252	2001252
3	Slinger	11	2001245	2001245	2001245	2001245	2001245
4	Nut - Pinion	12	44189	44189	2002749	2002749	2002749
5	Bearing/Bushing	30	566121	566121	2002806	2002806	2002806
6	Bearing/Bushing	31	566063	566063	2002805	2002805	2002805
			2007693	610774	611044	611053	611222
1	Seal - Pinion	9	2002974	51501	51501	51501	51501
2	End Yoke Assembly (inc 11)	10	2001252	2-4-6901-1X	2-4-6901-1X	2-4-6901-1X	2-4-6901-1X
3	Slinger	11	2001245	42779	42779	42779	42779
4	Nut - Pinion	12	2002749	44189	44189	44189	44189
5	Bearing/Bushing	30	2002806	566121	566121	566121	566121
6	Bearing/Bushing	31	2002805	566063	566063	566063	566063
			611316	611360			
1	Seal - Pinion	9	51501	51501			
2	End Yoke Assembly (inc 11)	10	2-4-6901-1X	2001252			
3	Slinger	11	42779	2001245			
4	Nut - Pinion	12	44189	44189			
5	Bearing/Bushing	30	566121	566121			
6	Bearing/Bushing	31	566063	566063			

**Model 50 /229
Front Axles for
F-250 & F-350**

Ford 50 /229 Front Parts Listing

ITEM NO.	PART NUMBER	DESCRIPTION	ITEM NO.	PART NUMBER	DESCRIPTION
1	-(3)	Housing - Axle Service	28	620414	Shaft - Differential
2	-(1)	Ring Gear & Pinion Kit	29	44810	Lock - Differential
3	701112X	PKG. - Inner Pinion Adj. Shim	30	-(2)	Seal - Oil
	701160X	PKG. - Diff & Pinion Shim		700238-2X	KIT - Socket Assembly (inc 31,32,34,35,36,37)
4	706015X	Inner Pinion Bearing Kit	31	500024-8	Pin - Cotter
5	47742	Baffe - Pinion Bearing	32	44101	Nut - Slotted
6	44896	Collapsible Spacer	33	44507	Bushing
7	706030X	Outer Pinion Bearing Kit		-(5)	(Alternate Bushing Selection)
8	13575	Slinger - Pinion Bearing Outer	34	2001257	Upper Socket Assy
9	-(2)	Seal - Pinion	35	44133	Nut - Lock
10	47762	Seal - End Yoke	36	2001258	Lower Socket Assy
11	3-4-13761-1	End Yoke Assembly	37	620343	Snap Ring
12	30186	Washer - Pinion Nut	38	-(3)	Knuckle (LH/RH)
13	30185	Nut - Pinion	39	48660	Nut - Knuckle
14	47707-1	Carrier Cover	40	50381	Oil Seal
15	43180	Plug - Carrier Cover	41	-(1)	Shaft & Joint Assembly
16	47508-2	Bolt - Carrier Cover (qty 9)	42	50491	Oil Seal
17	38615	RTV Silicone Sealant	43	47766	Thrustwasher
18	-(3)	Cap - Differential Bearing	44	47758	Dust Shield
19	48632-1	Bolt - Diff Bearing Cap	45	-(3)	Hub Assembly
20	700097	Differential Bearing Kit		701166X	PKG - Thrustwashers (inc 46,47)
21	701006X	PKG - Differential Adj. Shim	46	47760(4)	Thrustwasher
22	-(1)	Case - Differential	47	47759(4)	Thrustwasher
23	45784	Bolt - Drive Gear (qty 10)	48	620142	Snap Ring
24	620436(4)	Pinion - Differential	49	41784-2	O-Ring
25	40432(4)	Gear - Differential	50	47816(3)	Stud
26	620439(4)	Thrustwasher - Diff Pinion			
27	50718(4)	Thrustwasher - Diff Gear			

- (1) See "Bill of Material Table" on next page
 (2) See "Variable Parts Table" within this section
 (3) Contact Vehicle Manufacturer
 (4) Not Sold Separately
 (5) See Camber/Casting Bushing Table at the back of this catalog.

Ford 50 /229 Front Bill of Material Table

Axle			Axle Kits				Shaft & Joint Assy.	
Bill of Material	Diff. Type	Ratio	Ring Gear & Pinion Kit ⁽⁷⁾	Differential			Right Hand Shaft Assy.	Left Hand Shaft Assy.
				Case Assy. Kit ⁽⁸⁾	Case Kit	Inner Parts Kit		
1998 1/2-99 F-250/350 SRW (4x4)								
610659-1	Standard	3.73	76127-5X(9)	707459X	706917X	706916X	76110-1X	76110-2X
610659-2	Standard	4.10	660319-5(9)	707459X	706917X	706916X	76110-1X	76110-2X
610659-3	Standard	4.30	76136-5X(9)	707459X	706917X	706916X	76110-1X	76110-2X
1998 1/2-99 F-250/350 SRW (4x4) w/ABS								
610654-1	Standard	3.73	76127-5X(9)	707459X	706917X	706916X	76110-1X	76110-2X
610654-2	Standard	4.10	660319-5(9)	707459X	706917X	706916X	76110-1X	76110-2X
610654-3	Standard	4.30	76136-5X(9)	707459X	706917X	706916X	76110-1X	76110-2X
1999 1/2-2000 F-250/350 SRW (4x4)								
610892-1	Standard	3.73	76127-5X(9)	707459X	706917X	706916X	76110-1X	76110-2X
610892-2	Standard	4.10	660319-5(9)	707459X	706917X	706916X	76110-1X	76110-2X
610892-3	Standard	4.30	76136-5X(9)	707459X	706917X	706916X	76110-1X	76110-2X
1999 1/2-2000 F-250/350 SRW (4x4) w/ABS								
610893-1	Standard	3.73	76127-5X(9)	707459X	706917X	706916X	76110-1X	76110-2X
610893-2	Standard	4.10	660319-5(9)	707459X	706917X	706916X	76110-1X	76110-2X
610893-3	Standard	4.30	76136-5X(9)	707459X	706917X	706916X	76110-1X	76110-2X
2000 F-250/350 Excursion SRW (4x4) w/ABS								
610979-1	Standard	3.73	76127-5X(9)	707459X	706917X	706916X	76110-1X	76110-2X
610979-2	Standard	4.10	660319-5(9)	707459X	706917X	706916X	76110-1X	76110-2X
610979-3	Standard	4.30	76136-5X(9)	707459X	706917X	706916X	76110-1X	76110-2X
2000 F-250/350 SRW (4x4) w/ABS								
611071-1	Standard	3.73	76127-5X(9)	707459X	706917X	706916X	76110-1X	76110-2X
611071-2	Standard	4.10	660319-5(9)	707459X	706917X	706916X	76110-1X	76110-2X
611071-3	Standard	4.30	76136-5X(9)	707459X	706917X	706916X	76110-1X	76110-2X
2000 1/2 F-250/350 Excursion SRW (4x4) w/ABS								
610999-1	Standard	3.73	76127-5X(9)	707459X	706917X	706916X	76110-1X	76110-2X
610999-2	Standard	4.10	660319-5(9)	707459X	706917X	706916X	76110-1X	76110-2X
610999-3	Standard	4.30	76136-5X(9)	707459X	706917X	706916X	76110-1X	76110-2X
2000 1/2 F-250/350 SRW (4x4)								
610992-1	Standard	3.73	76127-5X(9)	707459X	706917X	706916X	76110-1X	76110-2X
610992-2	Standard	4.10	660319-5(9)	707459X	706917X	706916X	76110-1X	76110-2X
610992-3	Standard	4.30	76136-5X(9)	707459X	706917X	706916X	76110-1X	76110-2X
2000 1/2 F-250/350 SRW (4x4) w/ABS								
610993-1	Standard	3.73	76127-5X(9)	707459X	706917X	706916X	76110-1X	76110-2X
610993-2	Standard	4.10	660319-5(9)	707459X	706917X	706916X	76110-1X	76110-2X
610993-3	Standard	4.30	76136-5X(9)	707459X	706917X	706916X	76110-1X	76110-2X
2001 F-250/350 SRW (4x4)								
611194-1	Standard	3.73	76127-5X(9)	707459X	706917X	706916X	76110-1X	76110-2X
611194-2	Standard	4.10	660319-5(9)	707459X	706917X	706916X	76110-1X	76110-2X
611194-3	Standard	4.30	76136-5X(9)	707459X	706917X	706916X	76110-1X	76110-2X

(7) See Ring Gear & Pinion Kits in XGI Catalog for ratio & tooth combinations.
 (8) See Differential Case Assy Kits in XGI Catalog for spline data & ratios.
 (9) Gear set includes ring, pinion and drive gear screws.

Ford 50 /229 Front Bill of Material Table



Axle			Axle Kits				Shaft & Joint Assy.	
Bill of Material	Diff. Type	Ratio	Ring Gear & Pinion Kit ⁽⁷⁾	Differential			Right Hand Shaft Assy.	Left Hand Shaft Assy.
				Case Assy. Kit ⁽⁸⁾	Case Kit	Inner Parts Kit		
2002 F-250/350 SRW (4x4)								
2001272-1	Standard	3.73	76127-5X(9)	707459X	706917X	706916X	2002693-1	2002693-2
2001272-2	Standard	4.10	660319-5(9)	707459X	706917X	706916X	2002693-1	2002693-2
2001272-3	Standard	4.30	76136-5X(9)	707459X	706917X	706916X	2002693-1	2002693-2
611298-1	Standard	3.73	76127-5X(9)	707459X	706917X	706916X	76110-1X	76110-2X
611298-2	Standard	4.10	660319-5(9)	707459X	706917X	706916X	76110-1X	76110-2X
611298-3	Standard	4.30	76136-5X(9)	707459X	706917X	706916X	76110-1X	76110-2X
611336-1	Standard	3.73	76127-5X(9)	707459X	706917X	706916X	86002-1	86002-2
611336-2	Standard	4.10	660319-5(9)	707459X	706917X	706916X	86002-1	86002-2
611336-3	Standard	4.30	76136-5X(9)	707459X	706917X	706916X	86002-1	86002-2

(7) See Ring Gear & Pinion Kits in XGI Catalog for ratio & tooth combinations.

(8) See Differential Case Assy Kits in XGI Catalog for spline data & ratios.

(9) Gear set includes ring, pinion and drive gear screws.



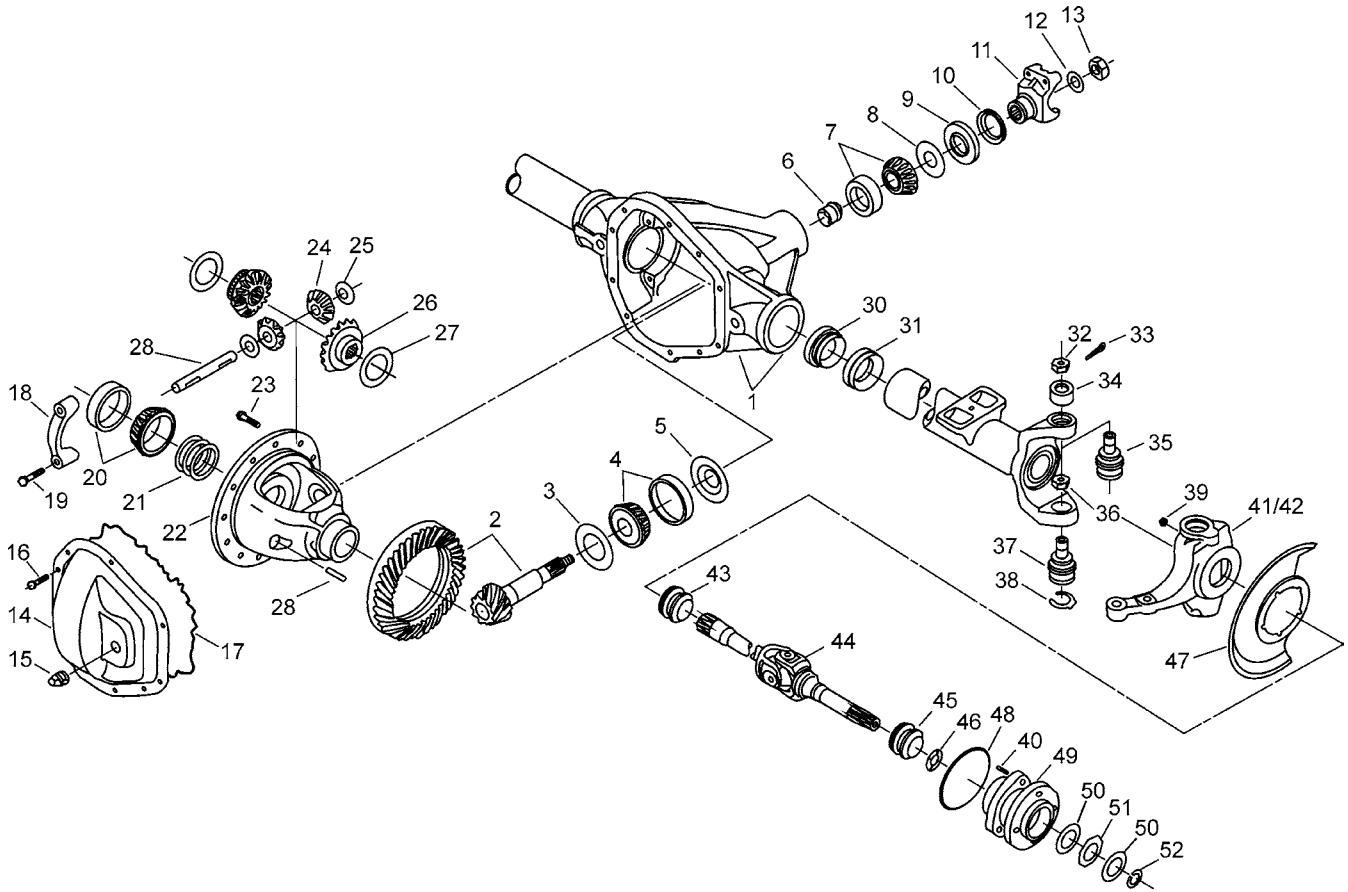
Ford 50 /229 Front Variable Parts Listing

X510-2

Kits & Parts - Use With All Applications							
Description & Item Number (Refer to "Exploded View" at the front of this section)			Bills of Material				
			2001272	610654	610659	610892	610893
1	Seal - Pinion	9	50531	47761	47761	47761	47761
2	Seal - Oil	30	52148	36487	36487	36487	36487
			610979	610992	610993	610999	611071
1	Seal - Pinion	9	47761	47761	47761	47761	50531
2	Seal - Oil	30	36487	36487	36487	36487	36487
			611194	611298	611336		
1	Seal - Pinion	9	50531	50531	50531		
2	Seal - Oil	30	36487	52148	52148		

**Model 60 /248
Front Axles for
F-250, F-350, F-450 & F-550**

Ford 60 /248 Front Exploded View



Ford 60 /248 Front Parts Listing

ITEM NO.	PART NUMBER	DESCRIPTION	ITEM NO.	PART NUMBER	DESCRIPTION
1	-(3)	Housing - Axle Service	28	44810	Lock - Differential Shaft
2	-(1)	Drive Pinion & Gear Kit	29	30263	Shaft - Differential
3	701161X	Shim - Inner Pinion Adj Package	30	52148	Seal - Guide Tube
	47890	Slinger (used on Dead Front only)	31	-(2)	Guide Tube
4	706046X	Inner Pinion Bearing		700238-2X	KIT - Socket Assembly
5	30982	Baffe - Pinion Bearing			(inc 32,33,35,36,37 & 38)
6	45658	Collapsible Spacer	32	44101	Nut - Hex Slotted
7	706045X	KIT - Outer Pinion Bearing	33	500024-8	Pin - Cotter
8	42737	Thrustwasher - Bearing	34	-(2)	Bushing
	-(2)	PKG - Seal (inc 9 & 10)		-(5)	(Alternate Bushing Selection)
9	-(2)	Seal - Pinion	35	2001257	Socket - Upper
10	47886	Seal - End Yoke	36	44133	Nut - Hex Jam
11	-(2)	End Yoke	37	2001258	Socket - Lower
12	30275	Washer - Pinion Nut	38	620343	Snap Ring
13	-(2)	Nut - Pinion	39	-(2)	Nut - Knuckle
14	47707-1	Cover - Carrier	40	47816(3)	Stud
15	-(2)	Plug - Carrier Cover	41	-(3)	Knuckle - Right
16	47508-2	Bolt - Carrier Cover (qty 10)	42	-(3)	Knuckle - Left
17	34687	Gasket - Carrier Cover	43	50381	Seal - Oil
18	-(3)	Cap - Differential Bearing	44	-(1)	Shaft & Joint Assembly
19	48632-1	Bolt - Differential Bearing Cap	45	-(2)	Seal - Oil
20	706047X	KIT - Differential Bearing	46	47766	Thrustwasher
21	708012	KIT - Diff Brg Adj Shim (inc 17)	47	-(2)	Dust Shield
22	-(1)	Case - Differential	48	41784-2	O-Ring
23	40638	Bolt - Drive Gear (qty 12)	49	-(3)	Hub Assembly
24	-(2)	Pinion - Differential		701166X	PKG - Thrustwasher (inc 50 & 51)
25	-(2)	Thrustwasher - Diff Pinion	50	47760(4)	Thrustwasher
26	-(2)	Gear - Differential (std)	51	47759(4)	Thrustwasher
27	34729	Thrustwasher - Diff Gear	52	620142	Snap Ring

- (1) See "Bill of Material Table" on next page
(2) See "Variable Parts Table" within this section
(3) Contact Vehicle Manufacturer
(4) Not Sold Separately
(5) See Camber/Casting Bushing Table in the back of this catalog

Ford 60 /248 Front Bill of Material Table

Axle			Axle Kits				Shaft & Joint Assy.	
Bill of Material	Diff. Type	Ratio	Ring Gear & Pinion Kit ⁽⁷⁾	Differential			Right Hand Shaft Assy.	Left Hand Shaft Assy.
				Case Assy. Kit ⁽⁸⁾	Case Kit	Inner Parts Kit		
1998-99 F-350 DRW (4x4)								
610655-1	Standard	3.73	707475-1X(10)	2005502	706040X	706702X	76150-1X	76150-2X
610655-2	Standard	4.10	707475-2X(10)	2005502	706040X	706702X	76150-1X	76150-2X
610655-3	Standard	4.30	707475-3X(10)	2005502	706040X	706702X	76150-1X	76150-2X
2000 F-350 DRW (4x4)								
610894-1	Standard	3.73	707475-1X(10)	706180X	706040X	706702X	76150-1X	76150-2X
610894-2	Standard	4.10	707475-2X(10)	706180X	706040X	706702X	76150-1X	76150-2X
610894-3	Standard	4.30	707475-3X(10)	706180X	706040X	706702X	76150-1X	76150-2X
610954-1	Standard	4.30	707475-3X(10)	706180X	706040X	706702X	76150-1X	76150-2X
610998-1	Standard	4.30	707475-3X(10)	706180X	706040X	706702X	76150-1X	76150-2X
611072-1	Standard	3.73	2007117(10)	706180X	706040X	706702X	76150-1X	76150-2X
611072-2	Standard	4.10	708233-2(10)	706180X	706040X	706702X	76150-1X	76150-2X
611072-3	Standard	4.30	708123-3(10)	706180X	706040X	706702X	76150-1X	76150-2X
611074-1	Standard	4.30	708123-3(10)	706180X	706040X	706702X	76150-1X	76150-2X
2000 F-450/550 DRW (4x4)								
610895-1	Standard	4.88	707475-4X(10)	706182X	706041X	706702X	76150-3X	76150-4X
610895-2	Standard	5.38	707475-5X(10)	706182X	706041X	706702X	76150-3X	76150-4X
611073-1	Standard	4.88	708123-4(10)	706182X	706041X	706702X	76150-3X	76150-4X
611073-2	Standard	5.38	708123-5(10)	706182X	706041X	706702X	76150-3X	76150-4X
611073-3	Standard	4.30	708123-3(10)	706180X	706040X	706702X	76150-3X	76150-4X
2000 F-450/550 DRW (4X2) Dead Front								
610896								
610897								
2000 1/2 F-350 DRW (4x4)								
610994-1	Standard	3.73	707475-1X(10)	706180X	706040X	706702X	76150-1X	76150-2X
610994-2	Standard	4.10	707475-2X(10)	706180X	706040X	706702X	76150-1X	76150-2X
610994-3	Standard	4.30	707475-3X(10)	706180X	706040X	706702X	76150-1X	76150-2X
2000 1/2 F-450/550 DRW (4x4)								
610995-1	Standard	4.88	707475-4X(10)	706182X	706041X	706702X	76150-3X	76150-4X
610995-2	Standard	5.38	707475-5X(10)	706182X	706041X	706702X	76150-3X	76150-4X
2000 1/2 F-450/550 DRW (4X2) Dead Front								
610996								
610997								
2001 F-350 DRW (4x4)								
611195-1	Standard	3.73	2007117(10)	706180X	706040X	706702X	76150-1X	76150-2X
611195-2	Standard	4.10	708233-2(10)	706180X	706040X	706702X	76150-1X	76150-2X
611195-3	Standard	4.30	708123-3(10)	706180X	706040X	706702X	76150-1X	76150-2X
611197-1	Standard	4.30	708123-3(10)	706180X	706040X	706702X	76150-1X	76150-2X
2001 F-450/550 DRW (4x4)								
611201-1	Standard	4.88	708123-4(10)	706182X	706041X	706702X	76150-3X	76150-4X
611201-2	Standard	5.38	708123-5(10)	706182X	706041X	706702X	76150-3X	76150-4X
611201-3	Standard	4.30	708123-3(10)	706180X	706040X	706702X	76150-3X	76150-4X
2001 F-450/550 DRW (4X2) Dead Front								
611198								
611199								

(7) See Ring Gear & Pinion Kits in XGI Catalog for ratio & tooth combinations.

(8) See Differential Case Assy Kits in XGI Catalog for spline data & ratios.

(10) Reverse Spiral Bevel

Ford 60 /248 Front Bill of Material Table

Axle			Axle Kits				Shaft & Joint Assy.	
Bill of Material	Diff. Type	Ratio	Ring Gear & Pinion Kit ⁽⁷⁾	Differential			Right Hand Shaft Assy.	Left Hand Shaft Assy.
				Case Assy. Kit ⁽⁸⁾	Case Kit	Inner Parts Kit		
2001-02 F-450/550 DRW (4x4)								
611196-1	Standard	4.88	708123-4(10)	706182X	706041X	706702X	76150-3X	76150-4X
611196-2	Standard	5.38	708123-5(10)	706182X	706041X	706702X	76150-3X	76150-4X
611196-3	Standard	4.30	708123-3(10)	706180X	706040X	706702X	76150-3X	76150-4X
2002 F-250/350 SRW (4x4)								
611159-1	Standard	3.73	2007117(10)	706180X	706040X	706702X	76150-1X	76150-2X
611159-2	Standard	4.10	708233-2(10)	706180X	706040X	706702X	76150-1X	76150-2X
611159-3	Standard	4.30	708123-3(10)	706180X	706040X	706702X	76150-1X	76150-2X
611299-1	Standard	3.73	2007117(10)	2005502	706040X	706702X	76150-1x	76150-2X
611299-2	Standard	4.10	708233-2(10)	2005502	706040X	706702X	76150-1X	76150-2X
611299-3	Standard	4.30	708123-3(10)	2005502	706040X	706702X	76150-1X	76150-2X
611337-1	Standard	3.73	2007117(10)	2005502	706040X	706702X	86003-1	86003-2
611337-2	Standard	4.10	708233-2(10)	2005502	706040X	706702X	86003-1	86003-2
611337-3	Standard	4.30	708123-3(10)	2005502	706040X	706702X	86003-1	86003-2
2002 F-350 DRW (4x4)								
611300-1	Standard	3.73	2007117(10)	2005502	706040X	706702X	76150-1X	76150-2X
611300-2	Standard	4.10	708233-2(10)	2005502	706040X	706702X	76150-1X	76150-2X
611300-3	Standard	4.30	708123-3(10)	2005502	706040X	706702X	76150-1X	76150-2X
611303-1	Standard	4.30	708123-3(10)	2005502	706040X	706702X	76150-1X	76150-2X
611338-1	Standard	3.73	2007117(10)	2005502	706040X	706702X	86003-1	86003-2
611338-2	Standard	4.10	708233-2(10)	2005502	706040X	706702X	86003-1	86003-2
611338-3	Standard	4.30	708123-3(10)	2005502	706040X	706702X	86003-1	86003-2
611340-1	Standard	4.30	708123-3(10)	2005502	706040X	706702X	86003-1	86003-2
2002 F-450/550 DRW (4x4)								
611301-1	Standard	4.30	708123-3(10)	2005502	706040X	706702X	76150-3X	76150-4X
611301-2	Standard	4.88	708123-4(10)	2005501	706041X	706702X	76150-3X	76150-4X
611301-3	Standard	5.38	708123-5(10)	2005501	706041X	706702X	76150-3X	76150-4X
611302-1	Standard	5.38	708123-5(10)	2005501	706041X	706702X	76150-3X	76150-4X
611302-2	Standard	4.88	708123-4(10)	2005502	706041X	706702X	76150-3X	76150-4X
611302-3	Standard	4.30	708123-3(10)	706180X	706040X	706702X	76150-3X	76150-4X
611339-1	Standard	5.38	708123-5(10)	2005501	706041X	706702X	76150-3X	76150-4X
611339-2	Standard	4.88	708123-4(10)	2005501	706041X	706702X	76150-3X	76150-4X
611339-3	Standard	4.30	708123-3(10)	2005502	706040X	706702X	76150-3X	76150-4X
2002 F-450/550 DRW (4X2) Dead Front								
611304								
611305								
2003 F-450/550 DRW (4X2) Dead Front								
611341-1								
611342-1								
2004 F-250/350 SRW (4x4)								
2001273-1	Standard	3.73	2007117(10)	2005502	706040X	708236	2002694-1	2002694-2
2001273-2	Standard	4.10	708233-2(10)	2005502	706040X	708236	2002694-1	2002694-2
2001273-3	Standard	4.30	708123-3(10)	2005502	706040X	708236	2002694-1	2002694-2

(7) See Ring Gear & Pinion Kits in XGI Catalog for ratio & tooth combinations.

(8) See Differential Case Assy Kits in XGI Catalog for spline data & ratios.

(10) Reverse Spiral Bevel



Ford 60 /248 Front Bill of Material Table

X510-2

Axle			Axle Kits				Shaft & Joint Assy.	
Bill of Material	Diff. Type	Ratio	Ring Gear & Pinion Kit ⁽⁷⁾	Differential			Right Hand Shaft Assy.	Left Hand Shaft Assy.
				Case Assy. Kit ⁽⁸⁾	Case Kit	Inner Parts Kit		
2004 F-350 DRW (4x4)								
2001274-1	Standard	3.73	2007117(10)	2005502	706040X	708236	2002694-1	2002694-2
2001274-2	Standard	4.10	708233-2(10)	2005502	706040X	708236	2002694-1	2002694-2
2001274-3	Standard	4.30	708123-3(10)	2005502	706040X	708236	2002694-1	2002694-2
2004 F-450/550 DRW (4x4)								
2001275-1	Standard	5.38	708123-5(10)	2005501	706041X	708236	2002694-3	2002694-4
2001275-2	Standard	4.88	708123-4(10)	2005501	706041X	708236	2002694-3	2002694-4
2001275-3	Standard	4.30	708123-3(10)	2005502	706040X	708236	2002694-3	2002694-4
2005-06 F-250/350 SRW (4x4)								
2002016-1	Standard	3.73	2007117(10)	2005502	706040X	708236	2002694-1	2002694-2
2002016-2	Standard	4.10	708233-2(10)	2005502	706040X	708236	2002694-1	2002694-2
2005-06 F-350 DRW (4x4)								
2002017-1	Standard	4.10	708233-2(10)	2005502	706040X	708236	2002694-1	2002694-2
2005-11 F-250/350 SRW								
2003791-1	Standard	3.54	708233-6(10)	2005502	706040X	708236	2002694-1	2002694-2
2005-11 F-350 DRW (4x4)								
2001276-1	Standard	4.30	708123-3(10)	2005502	706040X	708236	2002694-1	2002694-2
2009-11 F4000 (4x4) DRW								
2009652-1	Standard	4.10	2007118(10)	2005502	706040X	708236	2002694-1	2002694-2

(7) See Ring Gear & Pinion Kits in XGI Catalog for ratio & tooth combinations.

(8) See Differential Case Assy Kits in XGI Catalog for spline data & ratios.

(10) Reverse Spiral Bevel

Ford 60 /248 Front Variable Parts Listing



Kits & Parts - Use With All Applications							
Description & Item Number (Refer to "Exploded View" at the front of this section)			Bills of Material				
			2001273	2001274	2001275	2001276	2002016
1	PKG - Seal (inc 9 & 10)	-	703011	703011	703011	703011	703011
2	Seal - Pinion	9	50574	50574	50574	50574	50574
3	End Yoke	11	3-4-14531-1	3-4-14531-1	3-4-14531-1	3-4-14531-1	3-4-14531-1
4	Nut - Pinion	13	2001153	2001153	2001153	2001153	2001153
5	Plug - Carrier Cover	15	43180	43180	55674	43180	43180
6	Pinion - Differential	24	34367	34367	55654	55654	55654
7	Thrustwasher - Diff Pinion	25	34730	34730	54630	54630	54630
8	Gear - Differential (std)	26	35625	35625	55650	55650	55650
9	Guide Tube	31	48058	48058	48059	48058	48058
10	Bushing	34	44507	44507	44507	-	-
11	Nut - Knuckle	39	48660	48660	48660	54829	54829
12	Seal - Oil	45	54520	54520	54520	54520	54520
13	Dust Shield	47	47758	47758	47889	47758	47758
			2002017	2003791	2009652	610655	610894
1	PKG - Seal (inc 9 & 10)	-	703011	-	-	701164X	701164X
2	Seal - Pinion	9	50574	2009802	2009802	47885	47885
3	End Yoke	11	3-4-14531-1	3-4-14531-1	3-4-14531-1	3-4-12771-1	3-4-12771-1
4	Nut - Pinion	13	2001153	2001153	2001153	30271	30271
5	Plug - Carrier Cover	15	43180	43180	43180	43180	43180
6	Pinion - Differential	24	55654	55654	55654	34367	34367
7	Thrustwasher - Diff Pinion	25	54630	54630	54630	34730	34730
8	Gear - Differential (std)	26	55650	55650	55650	35625	35625
9	Guide Tube	31	48058	48058	48058	48058	48058
10	Bushing	34	-	-	-	44507	44507
11	Nut - Knuckle	39	54829	54829	54829	48660	48660
12	Seal - Oil	45	54520	54520	54520	50491	50491
13	Dust Shield	47	47758	47758	47758	47758	47758
			610895	610896	610897	610954	610994
1	PKG - Seal (inc 9 & 10)	-	701164X	-	-	701164X	701164X
2	Seal - Pinion	9	47885	-	-	47885	47885
3	End Yoke	11	3-4-12771-1	-	-	3-4-12771-1	3-4-12771-1
4	Nut - Pinion	13	30271	-	-	30271	30271
5	Plug - Carrier Cover	15	43180	-	-	43180	43180
6	Pinion - Differential	24	34367	-	-	34367	34367
7	Thrustwasher - Diff Pinion	25	34730	-	-	34730	34730
8	Gear - Differential (std)	26	35625	-	-	35625	35625
9	Guide Tube	31	48059	-	-	48058	48058
10	Bushing	34	44507	44507	44507	44507	44507
11	Nut - Knuckle	39	48660	48660	48660	48660	48660
12	Seal - Oil	45	50491	-	-	50491	50491
13	Dust Shield	47	47889	-	-	47758	47889

Ford 60 /248 Front Variable Parts Listing

Kits & Parts - Use With All Applications							
Description & Item Number (Refer to "Exploded View" at the front of this section)			Bills of Material				
			610995	610996	610997	610998	611072
1	PKG - Seal (inc 9 & 10)	-	701164X	-	-	701164X	703011
2	Seal - Pinion	9	47885	-	-	47885	50574
3	End Yoke	11	3-4-12771-1	-	-	3-4-12771-1	3-4-14531-1
4	Nut - Pinion	13	30271	-	-	30271	30271
5	Plug - Carrier Cover	15	43180	-	-	43180	43180
6	Pinion - Differential	24	34367	-	-	34367	34367
7	Thrustwasher - Diff Pinion	25	34730	-	-	34730	34730
8	Gear - Differential (std)	26	35625	-	-	35625	35625
9	Guide Tube	31	48059	-	-	48058	48058
10	Bushing	34	44507	44507	44507	44507	44507
11	Nut - Knuckle	39	48660	48660	48660	48660	48660
12	Seal - Oil	45	50491	-	-	50491	50491
13	Dust Shield	47	47889	-	-	47758	47758
			611073	611074	611159	611195	611196
1	PKG - Seal (inc 9 & 10)	-	703011	703011	703011	703011	703011
2	Seal - Pinion	9	50574	50574	50574	50574	50574
3	End Yoke	11	3-4-14531-1	3-4-14531-1	3-4-14531-1	3-4-14531-1	3-4-14531-1
4	Nut - Pinion	13	30271	30271	30271	30271	30271
5	Plug - Carrier Cover	15	43180	43180	43180	43180	43180
6	Pinion - Differential	24	34367	34367	34367	34367	34367
7	Thrustwasher - Diff Pinion	25	34730	34730	34730	34730	34730
8	Gear - Differential (std)	26	35625	35625	35625	35625	35625
9	Guide Tube	31	48059	48059	48058	48058	48059
10	Bushing	34	44507	44507	44507	44507	44507
11	Nut - Knuckle	39	48660	48660	48660	48660	48660
12	Seal - Oil	45	50491	50491	50491	50491	50491
13	Dust Shield	47	47889	47758	47758	47758	47889
			611197	611198	611199	611201	611299
1	PKG - Seal (inc 9 & 10)	-	703011	-	-	703011	703011
2	Seal - Pinion	9	50574	-	-	50574	50574
3	End Yoke	11	3-4-14531-1	-	-	3-4-14531-1	3-4-14531-1
4	Nut - Pinion	13	30271	-	-	30271	30271
5	Plug - Carrier Cover	15	43180	-	-	43180	43180
6	Pinion - Differential	24	34367	-	-	34367	34367
7	Thrustwasher - Diff Pinion	25	34730	-	-	34730	34730
8	Gear - Differential (std)	26	35625	-	-	35625	35625
9	Guide Tube	31	48058	-	-	48059	48058
10	Bushing	34	44507	44507	44507	44507	44507
11	Nut - Knuckle	39	48660	48660	48660	48660	48660
12	Seal - Oil	45	50491	-	-	50491	50491
13	Dust Shield	47	47758	-	-	47889	47758

Ford 60 /248 Front Variable Parts Listing

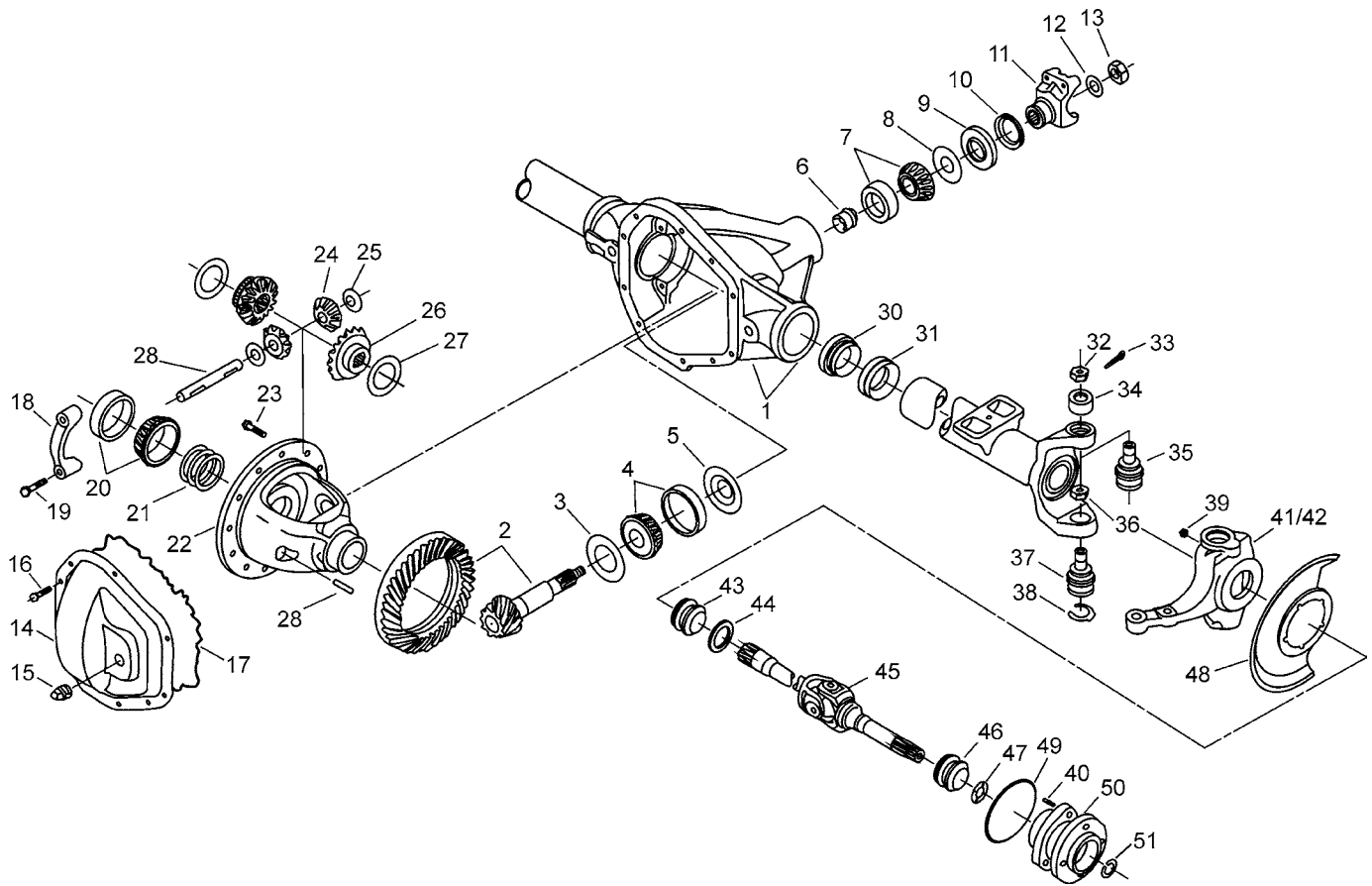


Kits & Parts - Use With All Applications							
Description & Item Number (Refer to "Exploded View" at the front of this section)			Bills of Material				
			611300	611301	611302	611303	611304
1	PKG - Seal (inc 9 & 10)	-	703011	701164X	703011	701164X	-
2	Seal - Pinion	9	50574	47885	50574	47885	-
3	End Yoke	11	3-4-14531-1	3-4-14531-1	3-4-14531-1	3-4-14531-1	-
4	Nut - Pinion	13	30271	30271	30271	30271	-
5	Plug - Carrier Cover	15	43180	43180	43180	43180	-
6	Pinion - Differential	24	34367	34367	34367	34367	-
7	Thrustwasher - Diff Pinion	25	34730	34730	34730	34730	-
8	Gear - Differential (std)	26	35625	35625	35625	35625	-
9	Guide Tube	31	48058	48059	48059	48058	-
10	Bushing	34	44507	44507	44507	44507	44507
11	Nut - Knuckle	39	48660	48660	48660	48660	48660
12	Seal - Oil	45	50491	50491	50491	50491	-
13	Dust Shield	47	47758	47758	47889	47758	-
			611305	611337	611338	611339	611340
1	PKG - Seal (inc 9 & 10)	-	-	703011	703011	703011	701164X
2	Seal - Pinion	9	-	50574	50574	50574	47885
3	End Yoke	11	-	3-4-14531-1	3-4-14531-1	3-4-14531-1	3-4-14531-1
4	Nut - Pinion	13	-	30271	30271	30271	30271
5	Plug - Carrier Cover	15	-	43180	43180	43180	43180
6	Pinion - Differential	24	-	34367	34367	34367	34367
7	Thrustwasher - Diff Pinion	25	-	34730	34730	34730	34730
8	Gear - Differential (std)	26	-	35625	35625	35625	35625
9	Guide Tube	31	-	48059	48058	48059	48058
10	Bushing	34	44507	44507	44507	44507	44507
11	Nut - Knuckle	39	48660	48660	48660	48660	48660
12	Seal - Oil	45	-	54520	50491	50491	54520
13	Dust Shield	47	-	47758	47758	47889	47758
			611341	611342			
1	PKG - Seal (inc 9 & 10)	-	-	-			
2	Seal - Pinion	9	-	-			
3	End Yoke	11	-	-			
4	Nut - Pinion	13	-	-			
5	Plug - Carrier Cover	15	-	-			
6	Pinion - Differential	24	-	-			
7	Thrustwasher - Diff Pinion	25	-	-			
8	Gear - Differential (std)	26	-	-			
9	Guide Tube	31	-	-			
10	Bushing	34	44507	44507			
11	Nut - Knuckle	39	48660	48660			
12	Seal - Oil	45	-	-			
13	Dust Shield	47	-	-			

NOTES

**Model Super 60 /256
Front Axles for
6K & 7K Monobeam Coil
F-250, F-350, F-450, F-550**

Ford Super 60 /256 Front Exploded View



Dana Holding Corporation
Aftermarket Group
PO Box 321
Toledo, Ohio 43697-0321

Phone: 1-800-SAY-DANA (729-3262)

www.spicerparts.com



SPICER[®]
Drivetrain Products